



Pillar Group Report: Healthy Babies

Date: September 5, 2008

Mission: Improve birth outcomes among high-risk moms in 67214.

Strategy: Increase awareness of the Healthy Babies Program in 67214

- Activities:**
1. Healthy Babies has partnered with the YWCA and the WPD to include information about Healthy Babies, prenatal care, the signs and symptoms of preterm labor and domestic violence in bags being distributed to victims or suspected victims of abuse in 67214.
This partnership continues and Healthy Babies staff regularly attends the DV coalition meetings. This enables a better understanding of each other's resources and facilitates interagency referrals.
 2. Healthy Babies and the YWCA collaborated to create a poster focusing awareness on domestic violence during the prenatal period. Both agencies are seeking permission to hang these posters in a variety of 67214 locations, such as doctor's office exam rooms, Quik Trips, Laundromats and the WSU campus.
This partnership continues and the Healthy Babies program has placed posters in their assigned Health Department sites and various locations on the Wesley campus. Over the next two months, we will be placing the posters in other sites per our partnership agreement.
 3. Healthy Babies is working with United Way to ensure that the 211 Resource Line maintains current information regarding the Healthy Babies program.
Per unidentified phone call made to the 211 line on 09-05-08 seeking prenatal educational services, the United Way specialist provided the Healthy Babies name and number as a community resource for prenatal education.
 4. *In addition, Healthy Babies completed our neighborhood outreach campaign in August 2008. This community awareness campaign allowed us to place bilingual educational door hangers on over 18,000 residential and business doors in zip codes 67208, 67214 and 67219 on Thursday mornings, weather permitting, over a two-year period, to enhance community understanding of our program and increase referrals.*

Outcomes: **Infant mortality** is defined as the number of deaths of infants (one year of age or younger) per 1000 live births. Based on three-year rolling averages, the overall Infant Mortality Rate (IMR) for New Communities zip code 67214 (NC67214) has steadily risen since 1998, with the IMR for 2004-2006 at 23.18 infant deaths per 1,000 live births, far from the Healthy People 2010 goal of 4.5 infant deaths per 1,000 live births.

For the five years ending in 2006, the IMR for clients residing in NC67214 or one of the other federally-funded Healthy Start zip codes served by the Healthy Babies program (67208 or 67219), referred to as the Northeast Wichita Healthy Start Initiative, *the IMR has remained at zero (0.00)*.

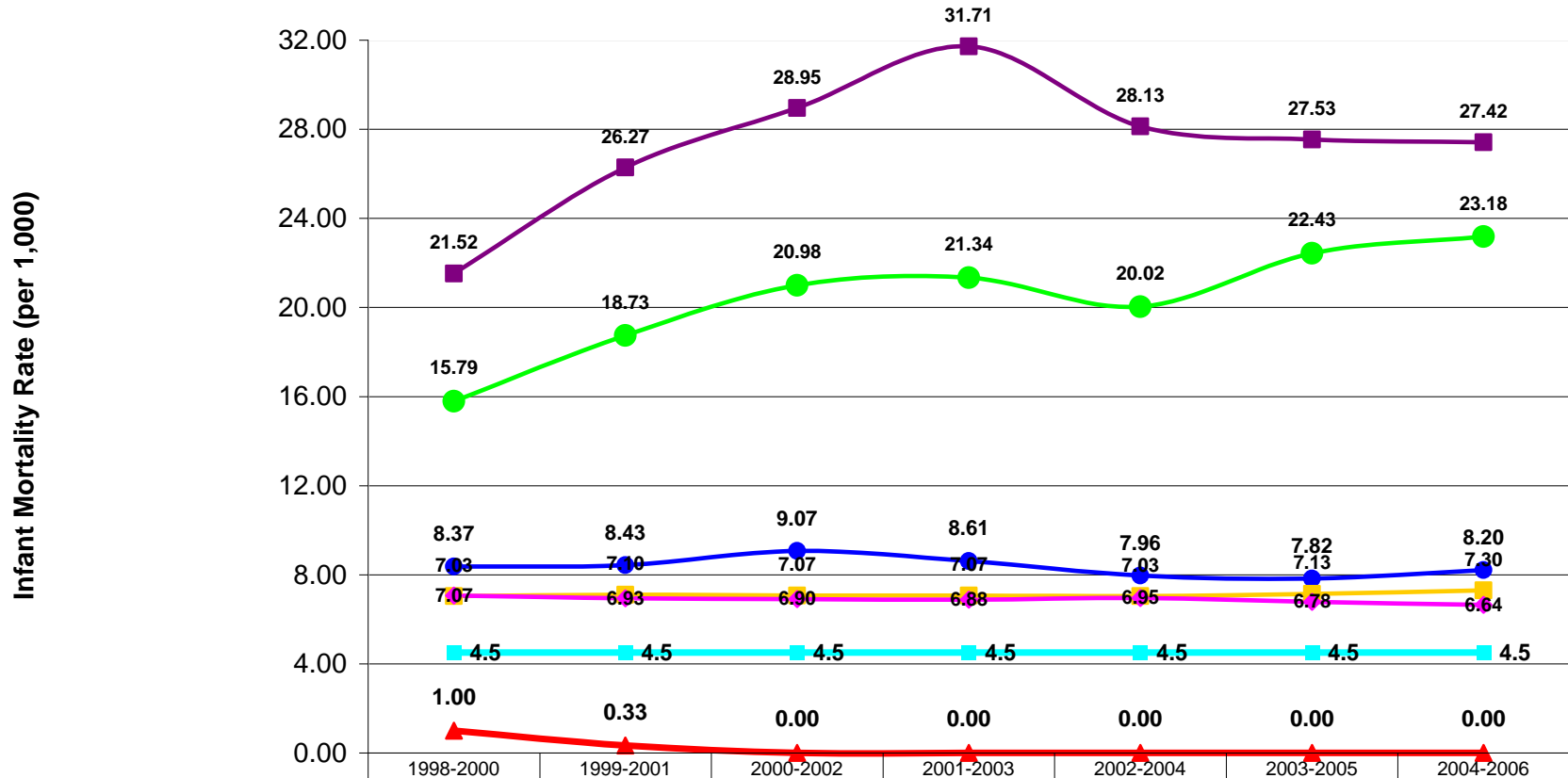
Low Birth Weight (LBW) is defined as babies born weighing less than 5 pounds, 8 ounces (2,500 grams). As the chart on page four shows, the percent of low birth weight births continues to rise. The three-year rolling average in 2004-2006 was 9.83% LBW, which is far from the Healthy People 2010 goal of $\leq 5\%$.

- Next Steps:**
1. ***Celebrate your Family, Celebrate You*** ~ Healthy Babies is partnering with other community agencies for this second annual community outreach event at the Boys and Girls Club on August 2, 2008.
Celebrate your Family, Celebrate You was even more successful this year. We had 394 moms, dads and children attend the event, an increase of 134 over last year.
 2. **CenteringPregnancy® and CenteringParenting®** ~ Implementation for Healthy Babies will begin in the fall of 2008 and this group model of care has been proven to normalize pregnancy experiences and improve birth outcomes for high-risk moms.
The first CenteringPregnancy® and CenteringParenting® groups will start in October 2008.
 3. **Continuation of activities noted above**

Baseline Impact: **Infant Mortality Rate** ~ Use 2006 three-year rolling average (2004-2005-2006) as our baseline for 67214 ~ 23.18 infant deaths per 1,000 live births, all races.

Low Birth Weight Rate ~ Use 2006 three-year rolling average (2004-2005-2006) as our baseline for 67214 ~ 9.83% babies born LBW, all races.

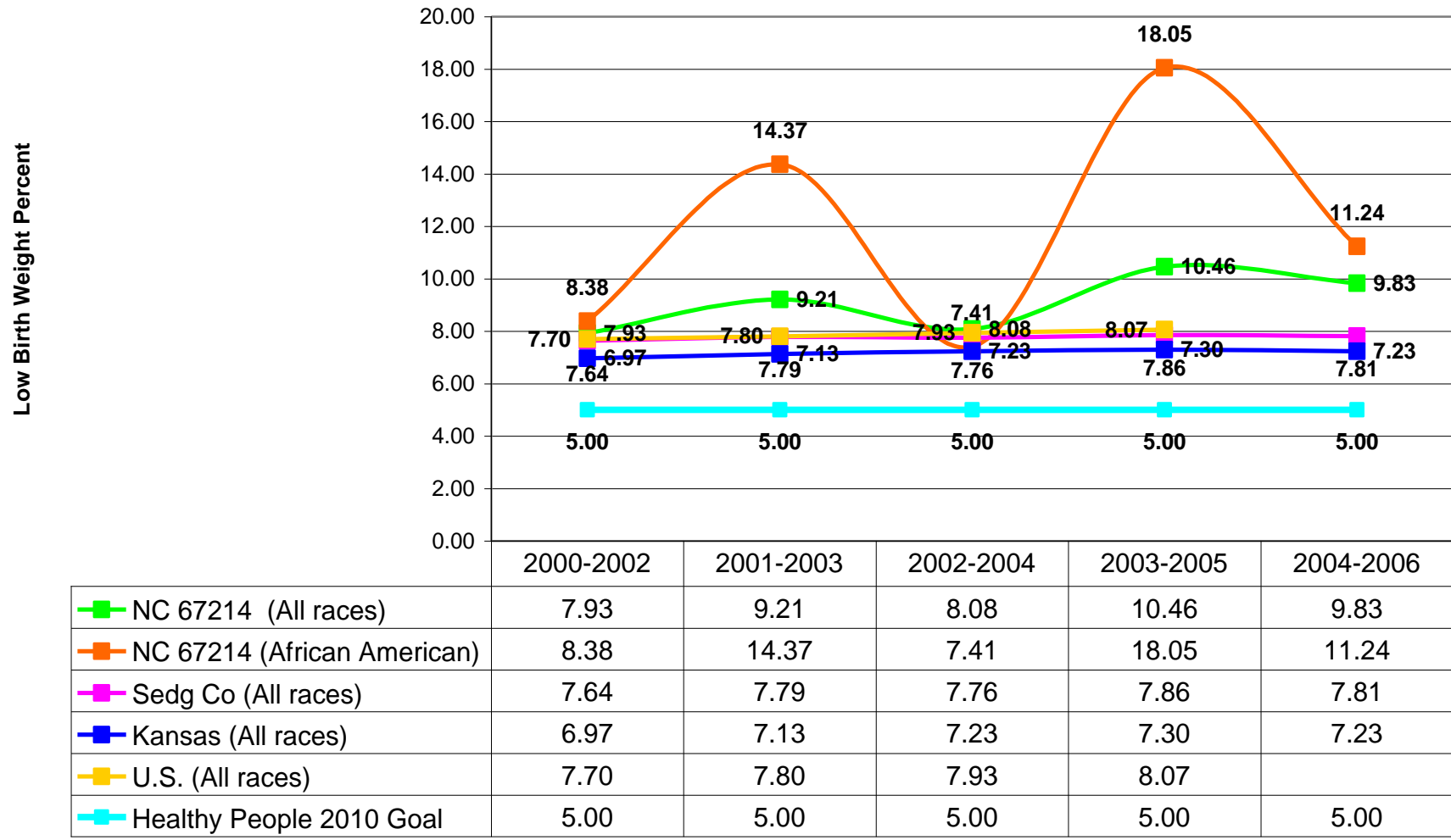
Infant Mortality Rates for Northeast Wichita Healthy Start Initiative (NEWHSI) enrolled clients (all races) compared to IMR for zip code 67214 (African American & all races), and Sedgwick Co., KS and US (all races), based on three-year rolling averages



	1998-2000	1999-2001	2000-2002	2001-2003	2002-2004	2003-2005	2004-2006
NC 67214 (All races)	15.79	18.73	20.98	21.34	20.02	22.43	23.18
NC 67214 (African American)	21.52	26.27	28.95	31.71	28.13	27.53	27.42
NEWHSI Enrolled Clients	1.00	0.33	0.00	0.00	0.00	0.00	0.00
Sedgwick Co (All races)	8.37	8.43	9.07	8.61	7.96	7.82	8.20
Kansas (All races)	7.03	7.10	7.07	7.07	7.03	7.13	7.30
U.S. (All races)	7.07	6.93	6.90	6.88	6.95	6.78	6.64
Healthy People 2010 Goal	4.5	4.5	4.5	4.5	4.5	4.5	4.5

NEWHSI and Healthy Babies grant data provided by Healthy Babies
All other data provided by KDHE Office of Vital Statistics (08-07-08)

**Low Birth Weight Percent for New Communities Targeted Zip Code 67214 in Wichita, KS
(African American and all races), compared to Sedgwick Co., KS, and US (all races),
based on 3-year rolling averages**



Data provided by KDHE Office of Vital Statistics
08-07-08



Pillar Group Report: Physical, Mental, and Behavioral Health Substance Abuse Sub-Committee

Date: September 8, 2008

Mission: Increase the availability and use of substance abuse treatment and prevention:

Strategy – Increase availability and use of substance abuse treatment and prevention for NCI residents.

Activities – Secured City Liquor Tax funds for the NCI area

All Liquor Tax grantees will serve some clients in the NCI area

Some examples of these increased activities include:

- Establish new Oxford House in NCI area by 12/31/2008
- Prioritize youth from 67214 for matches with Bigs through Big Brothers Big Sisters
 - BBBS has nearly matched the same number of youth in all of 2007 through August 2008 – served 126 youth in 2007 and 115 in 2008
- Substance use treatment for adults through Center for Health and Wellness clinic which is located in the NCI area has served nearly as many clients 2008 as were served in all of 2007
- Higher Ground has served as many youth in through August 2008 as were served in all of 2007
- Recovery Concepts has served as many clients through August 2008 as were served in all of 2007
- Substance Abuse Center of Kansas has conducted more assessments (clients served) in 2008 than in all of 2007
- Through August 2008, Miracles Outpatient Case Management has tripled the number of clients served in 67214 since 2007 – served 17 clients in 2007 and 63 clients in 2008

Outcomes – Services focused in the area of as of January 1, 2008

295 persons have enrolled in treatment programs that receive liquor tax funds

410 persons have enrolled in substance use prevention programs that receive liquor tax funds (data not including year – to – date for Communities in Schools)

Outcomes to be reported at year end: Total number of clients participating in prevention programs (receiving liquor tax funds only) - Total number of clients participating in a treatment program

Next Steps – Monitor progress through quarterly reports and site visits (outcomes for treatment and prevention in the reports)
Assist agencies with data collection methods to ensure all clients from 67214 are counted
Review substance use reports by the State to gain a better understanding of community needs

Baseline Impact - ___ persons participating in a substance use program in the target area
___ persons participating in a substance use prevention program in the target area



Pillar Group Report: **PHYSICAL, MENTAL AND BEHAVIORAL HEALTH WORKGROUP**
Grandparents & Elders Sub-Committee

Date: Sept 5, 2008

Mission: Improve health of grandparents and elders:

Strategy – Increase awareness and symptom management of Diabetes, Stroke & Heart Disease.

Activities –

- Two focus groups were held at senior centers in the 67214 area. Initial results discuss the need for advocacy services to understand insurance bills, accessing appropriate and necessary services, and a lack of dentistry (dentures) and pharmacy in the area.
- Planning for a “Health Day” community event to increase knowledge of local health services available to the 67214 area.

Outcomes – Decrease in overall hospitalizations and ER visits of this population.

Next Steps –

- Explore ways to add advocacy services into this community.
- Contact local event planners to combine efforts regarding a “Health Day” event.
- Gather information regarding baseline data for 67214 specifically.
- Continue to evaluate viability of instituting a Case Management Model that includes home visitation, public education and outreach, and community resources education.

Baseline Impact – We have not begun targeted services to this point therefore current measurement will measure baseline only.

Mission: Support grandparents raising grandchildren

Strategy: Increase grandparents raising Grandchildren support

Activities: Find out via focus group what the needs of the current population are and what keeps them from accessing any current services offered.

Outcomes: Increase in numbers accessing Grandparents as caregivers state support funds.

Next Steps

- Begin focus groups activity (due to time allotted at the group were unable to poll the senior center participants regarding this topic)
- Gather information regarding baseline data for 67214 specifically.
- Increase case management services offered and target 67214.
- Increase support group availability and offer in the 67214 area.

Baseline Impact– We have not begun targeted services to this point therefore current measurement will measure baseline only.