



Pillar Group Report: **PHYSICAL, MENTAL AND BEHAVIORAL HEALTH WORKGROUP**
Grandparents & Elders Sub-Committee

Date: June 30, 2008

Mission: **Improve health of grandparents and elders:**

Strategy – **Increase awareness and symptom management of Diabetes, Stroke & Heart Disease.**

Activities –

- **Find out via focus group what keeps the population from accessing current services. First phase of focus groups begins in June of 2008**
- **Planning for a “Health Day” community event to increase knowledge of local health services available to the 67214 area.**

Outcomes – **Decrease in overall hospitalizations and ER visits of this population.**

Next Steps –

- **Continue focus groups activity**
- **Contact local event planners to combine efforts regarding a “Health Day” event.**
- **Gather information regarding baseline data for 67214 specifically.**
- **Continue to evaluation viability of instituting a Case Management Model that includes home visitation, public education and outreach, and community resources education.**

Baseline Impact – We have not begun targeted services to this point therefore current measurement will measure baseline only.

Mission: Support grandparents raising grandchildren

Strategy: Increase grandparents raising Grandchildren support

Activities: Find out via focus group what the needs of the current population are and what keeps them from accessing any current services offered. First phase of focus groups begins in June of 2008

Outcomes Increase in numbers accessing Grandparents as caregivers state support funds.

Next Steps

- **Continue focus groups activity**
- **Gather information regarding baseline data for 67214 specifically.**
- **Increase case management services offered and target 67214.**
- **Increase support group availability and offer in the 67214 area.**

Baseline Impact– We have not begun targeted services to this point therefore current measurement will measure baseline only.



Pillar Group Report: Physical, Mental & Behavioral Health Healthy Babies

Date: June 30, 2008

Mission: Improve birth outcomes among high-risk moms in 67214.

Strategy: Increase awareness of the Healthy Babies Program in 67214

- Activities:**
1. Healthy Babies has partnered with the YWCA and the WPD to include information about Healthy Babies, prenatal care, the signs and symptoms of preterm labor and domestic violence in bags being distributed to victims or suspected victims of abuse in 67214.
 2. Healthy Babies and the YWCA collaborated to create a poster focusing awareness on domestic violence during the prenatal period. Both agencies are seeking permission to hang these posters in a variety of 67214 locations, such as doctor's office exam rooms, Quik Trips, Laundromats and the WSU campus.
 3. Healthy Babies is working with United Way to ensure that the 211 Resource Line maintains current information regarding the Healthy Babies program.

Outcomes: **Infant mortality** is defined as the number of deaths of infants (one year of age or younger) per 1000 live births. Based on three-year rolling averages, the overall Infant Mortality Rate (IMR) has steadily risen since 1998, with the IMR for 2006 at 23.18 infant deaths per 1,000 live births, far from the Healthy People 2010 goal of 4.5 infant deaths per 1,000 live births.

For the five years ending in 2006, the IMR for participating Healthy Babies Healthy Start clients remained at zero (0.00).

Low Birth Weight (LBW) is defined as babies born weighing less than 5 pounds, 8 ounces (2,500 grams). Based on three-year rolling averages, the 2006 overall LBW rate of 9.83% is on a downward trend but remains far from the Healthy People 2010 goal of $\leq 5\%$.

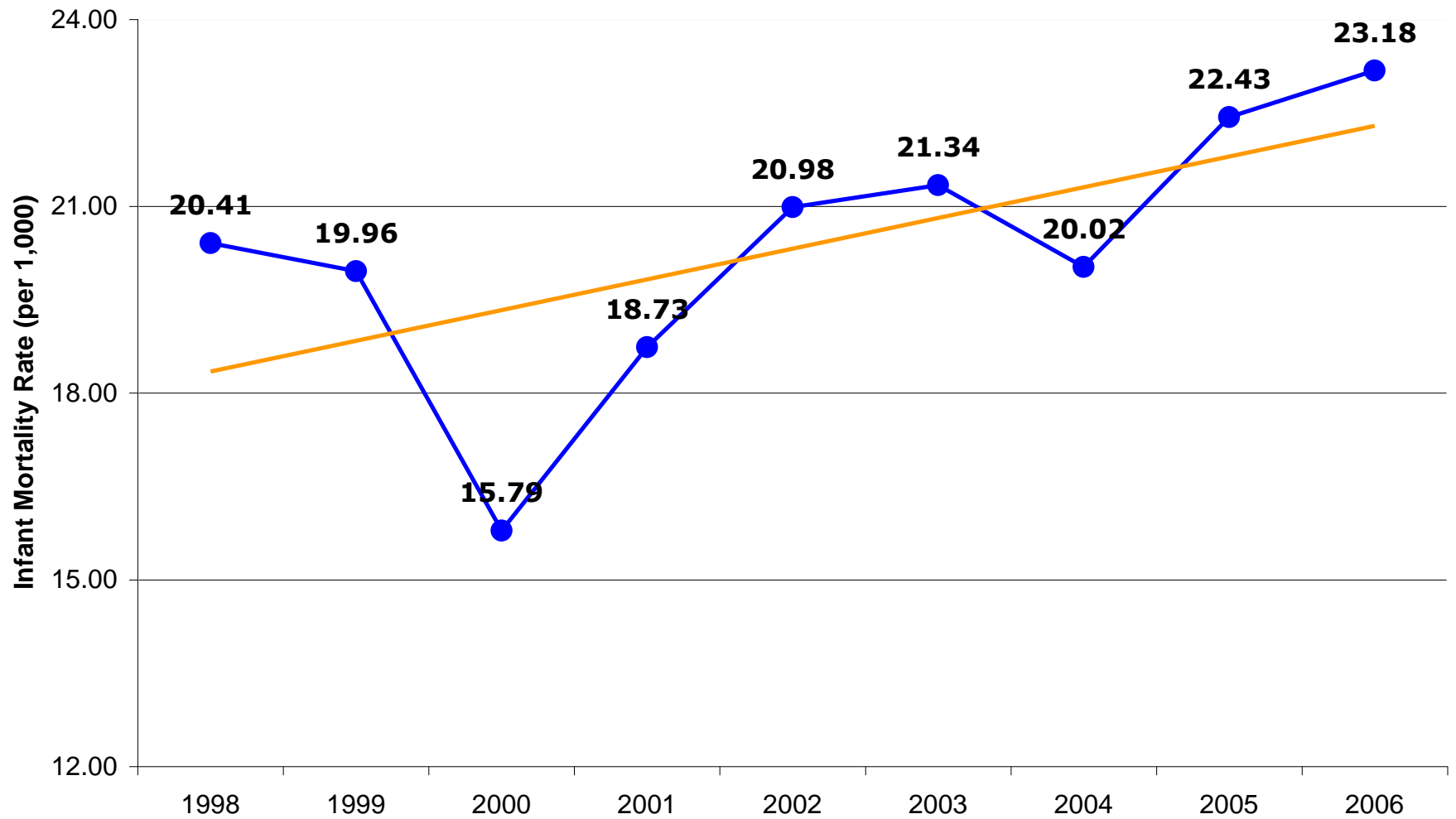
The 2006 LBW rate for participating Healthy Babies clients was 6%.

- Next Steps:**
- 1. Celebrate your Family, Celebrate You** ~ Healthy Babies is partnering with other community agencies for this second annual community outreach event at the Boys and Girls Club on August 2, 2008.
 - 2. CenteringPregnancy© and CenteringParenting©** ~ Implementation for Healthy Babies will begin in the fall of 2008 and this group model of care has been proven to normalize pregnancy experiences and improve birth outcomes for high-risk moms.
 - 3. Continuation of activities noted above**

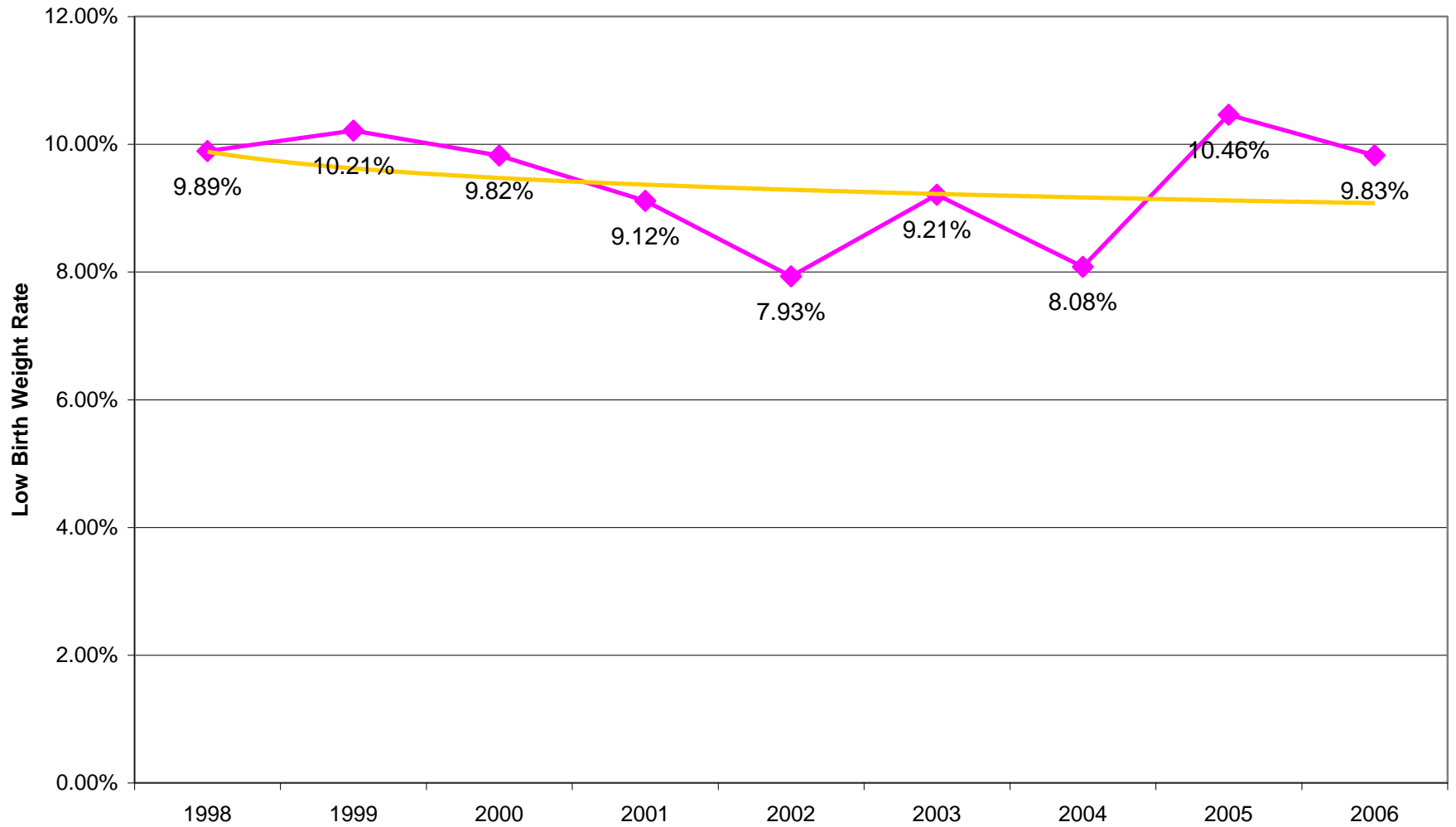
Baseline Impact: **Infant Mortality Rate** ~ Use 2006 three-year rolling average (2004-2005-2006) as our baseline for 67214 ~ 23.18 infant deaths per 1,000 live births

Low Birth Weight Rate ~ Use 2006 three-year rolling average (2004-2005-2006) as our baseline for 67214 ~ 9.83% babies born LBW

Infant Mortality Rate for New Communities Targeted Zip Code 67214 Wichita, Sedgwick County, KS (3-year rolling averages)



Low Birth Weight Rate for New Communities Targeted Zip Code 67214 Wichita, Sedgwick County, KS (3-year rolling averages)





Pillar Group Report: Physical, Mental, and Behavioral Health Substance Abuse Sub-Committee

Date: June 30, 2008

Mission: Increase the availability and use of substance abuse treatment and prevention:

Strategy – Increase availability and use of substance abuse treatment and prevention for NCI residents.

Activities – Secured City Liquor Tax funds for the NCI area

All Liquor Tax grantees will serve clients in the NCI area at some

Some examples of these increased activities include:

- Establish new Oxford House in NCI area by 12/31/2008
- Prioritize youth from 67214 for matches with Bigs through Big Brothers Big Sisters
- Substance use treatment for adults through Center for Health and Wellness clinic which is located in the NCI area
- Higher Ground's substance use prevention program provides activities in the NCI area

Outcomes – Services focused in the area of as of January 1, 2008

___ persons have enrolled in treatment programs that receive liquor tax funds

___ persons have enrolled substance use prevention programs that receive liquor tax funds

Outcomes to be reported at year end: Total number of clients participating in a prevention programs (receiving liquor tax funds only) - Total number of clients participating in a treatment program

Next Steps – Monitor progress through quarterly reports and site visits (outcomes for treatment and prevention in the reports)
Review substance use reports by the State to gain a better understanding of community needs

Baseline Impact - ___ persons participating in a substance use program in the target area
___ persons participating in a substance use prevention program in the target area